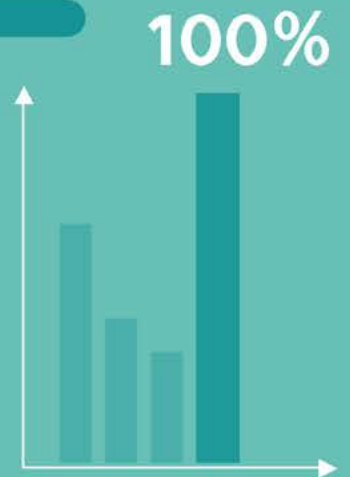




Ergolife
Office Furniture
Leasing Ltd



task & ergonomic



Content

— task & executive

Ensemble	4-7
Pepi	8-9
Pepi Mesh	10-13

— essential task

Remi	16-19
Remi Mesh	20-23
Nomi	24-25
Tally	26-27

— ergonomic task

Reflex	28-29
AM:PM (24h chair)	30-31
Axia Focus (24h chair)	32-33
Axia® 2.0	34-37

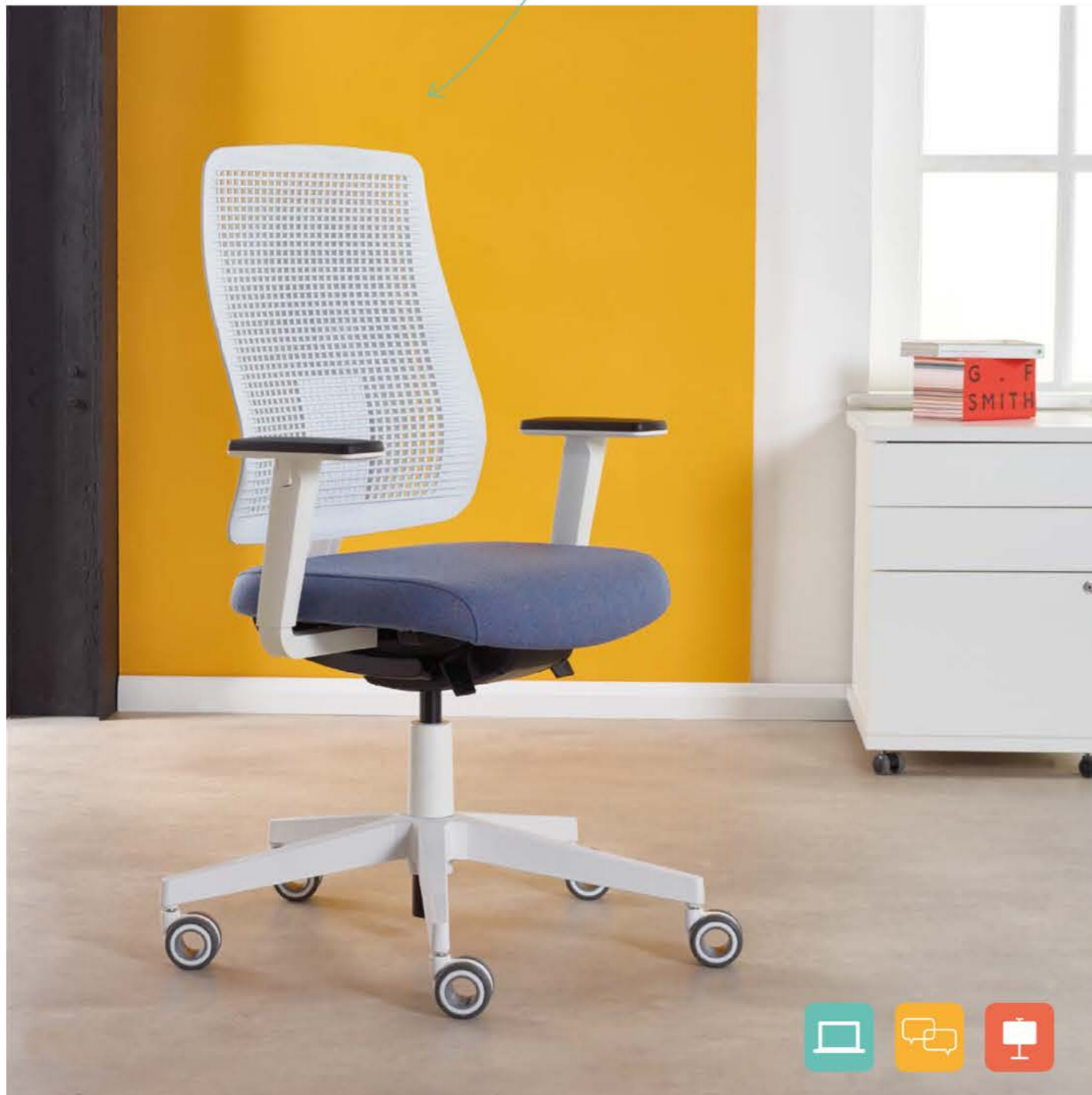
let's get started



Ensemble

design that lasts

10 year warranty



EASY TO PRODUCE

It's all in the detail. Ensemble is made from a high content of recycled material, minimising the use of virgin material and the impact on the environment.

Ensemble has been designed with an easy "click" system, which enables quick and simple assembly without the need for tools. This saves time during production and allows easy shipping and storage.

EASY TO USE AND MAINTAIN

Ensemble is fitted with a synchronised balance mechanism that automatically adjusts to the user's weight. The contoured, height adjustable back ensures back support. The perforations provide ventilation. The overall comfort is completed by adjustable armrest, a moulded foam seat cushion and additional seat depth adjustment. Easy adjustment and comfort for everybody!

Ensemble has a long and useful life with a warranty of 10 years. Thanks to the clever assembly system the chairs can be easily maintained or repaired on site. Even if you change the interior of the office, just replace the seat cushion to prolong the life of your office chair.

EASY TO DISASSEMBLE

Disassembly could not be easier. All parts can be recycled and some of that even goes back into the lifecycle to produce new chairs.

Don't dispose – return! We see the value in the old chairs. At the end of the useful life, all Ensemble can be returned to the factory, free of charge. In some cases we can even offer a buy back scheme offering sustainable solution not only for the environment but also your budget.

"EASY ON THE EYE"

Ensemble's design is stunning yet simple and functional. The task chair is available in black or white with a range of ergonomic accessories. We also offer an upholstered back pad for additional comfort. Following the "click" principle these back pads can be simply clipped onto the back rest.



Pepi

fully up to spec



The new design of Pepi has given it a completely new look. However the initial concept is still the same: Pepi has been designed with convenience in mind.

It combines comfort and functionality, with its user friendly, easy to adjust synchronised balance mechanism. The new slim fully upholstered back allows creativity with fabrics to complement an inspiring work environment. Pepi offers a simple yet stylish design at an affordable price — ideal for the modern workplace.



Pepi Mesh

keeping you in balance



Different people have different needs when it comes to seating and it's not uncommon that people share workspaces. This is why simple adjustment for task seating becomes more and more important. Pepi Mesh is fitted with a weight balancing mechanism, which makes setting up child's play.

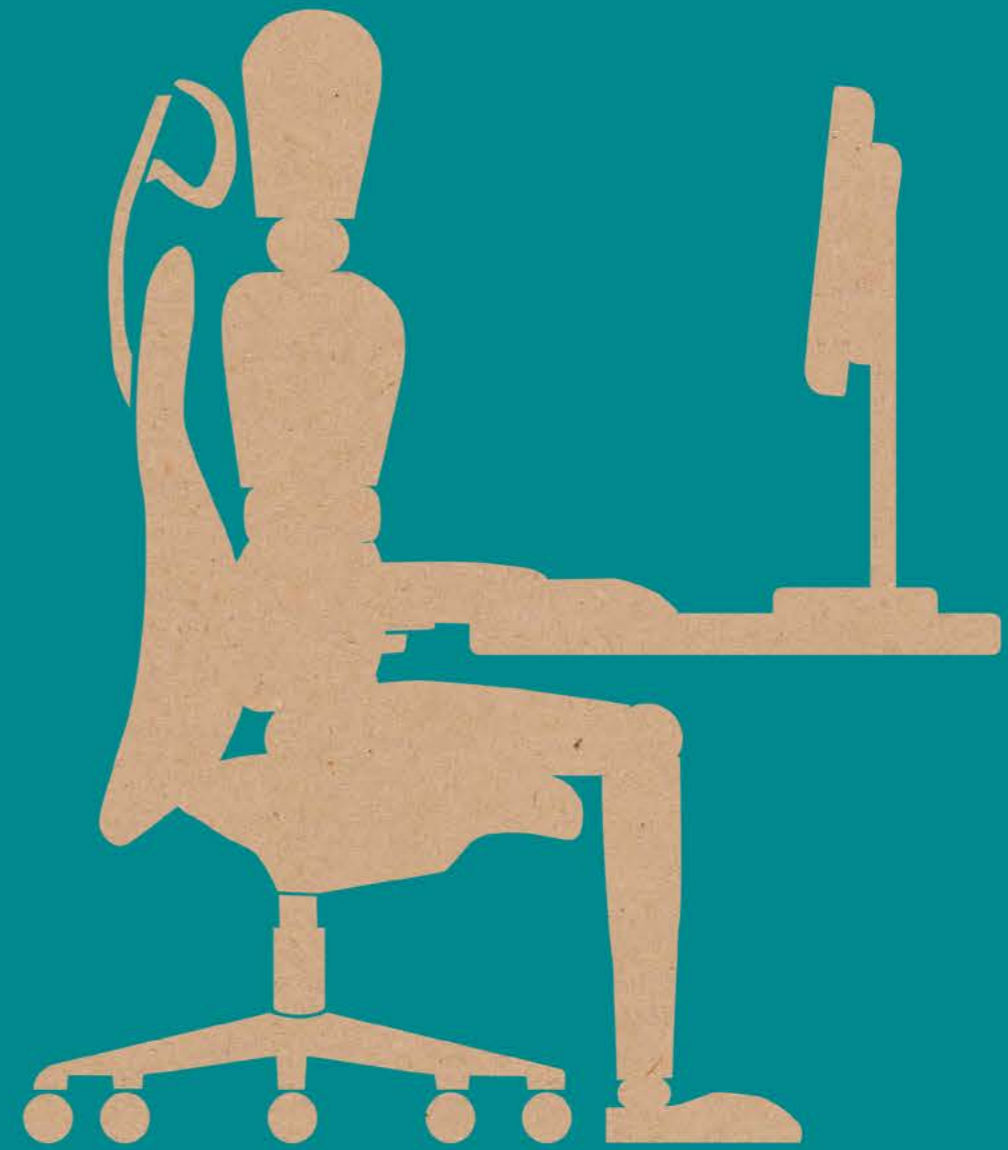
We also introduce five new colours for the mesh back, making Pepi Mesh a colourful asset for the workplace.







“ Our task chairs offer support and comfort throughout the working day to keep energy and concentration levels up. ”



! For every half an hour you spend sitting you should stand up for a minimum of 2 minutes and get moving

Remi

the essential choice



Remi is the essential task chair, suitable for every office and every budget. Remi features a contoured seat and back as well as height adjustable arm for comfort and support. Choose between a PCB or ISB mechanism. Options such as the polished aluminium base give Remi the appearance and feel of a top of the range chair.





Remi Mesh

the lighter approach



Remi Mesh — the essential task chair fitted with an eye-catching mesh back. The mesh back is ergonomically shaped, height adjustable and available in six different colours. Like its fully upholstered brother, Remi can be specified with a PCB or ISB mechanism.





Tally

a different look



Tally is a modular system which allows the interchange of parts and accessories to meet individual requirements, whilst maintaining a consistent look throughout the office. The square, more contemporary design of backrest and seat, combined with a quality mechanism and ergonomic accessories, make Tally a popular, reliable and affordable choice.

Nomi

a solution for everyone

*ideal for open plan:
a consistent look throughout the office,
yet an individual solution for everyone*

Nomi is the master of transformation. Choose between three sizes of backs, two sizes of seats, three mechanisms, four arm options and a wide range of ergonomics accessories to suit the user's requirements, workstation and budget. Nomi offers a solution for everyone.



Reflex

ergonomics at work



Reflex has been designed to give optimal support and individual comfort throughout the working day, enhancing the productivity of your team. Reflex offers more adjustment and customisation than most chairs, ideal for organisations looking for cost-effective functionality and fit for the whole team. Reflex is simply ticking all the boxes.

Accessories and options include, amongst others, an adjustable headrest, 4D adjustable arms and seat customisation with memory foam, coccyx cut out or split seat foam density.



AM:PM

support 24/7



Facilities where people work around the clock require the right equipment. It is important to have the best chair to ensure performance — day and night, when concentration is a must.

A steel structure on the inside, makes the chair robust and practically indestructible. Moulded foam padding on back and seat offer great comfort. Fitted with a high performance ISB mechanism, with a weight setting of up to 190kg/30 Stone, AM:PM can stand the 24h pressure.



Axia[®] Focus

focused working 24/7



The Axia Focus 24/7 combines elegance with robustness, and thanks to the extremely solid construction, it is ideally suited for 24/7 workstations. This chair meets all ergonomic and strength requirements and offers a high degree of comfort.

Additional to standard Axia features the Axia Focus 24/7 offers a pelvis support in the back panel that can be easily adjusted to personal requirements, it follows the movement of the back so that the pelvis is supported at all times. The headrest is easy to adjust and the covers can be removed for washing.

*ideally suited for both,
observation tasks and
intensive VDU work*



Axia[®]

Smart Seating System



The Axia 2.0 Smart Seating System is not just an ergonomic chair that supports the user to achieve a healthy and relaxed posture at work.

It is an award-winning, modular seating system that combines our knowledge and expertise in the field of ergonomics with technology and sustainability.

We study the ever changing workplace and understand the requirements and needs of the individual worker. The new Axia Smart Seating System makes the user aware of their posture when seated and actively supports them. The Axia Smart Seating System is designed to support everyone to achieve a healthier way of working.

RELAXED SUPPORT

The Axia is crafted to ensure that you sit and move correctly. It supports the pelvis to prevent it from rotating when sitting. A well supported pelvis will help the back to support itself and the spine will stay in a natural s-shape.

The armrest do not move with the chair to ensure optimal support of the arms to keep the shoulders and neck relaxed.

Through a patented split seat mechanism, only the rear part of the seat tilts back whereas the foremost part will always stay horizontal. This alleviates pressure on the legs, keeping the feet firmly on the floor.

SITTING SMART

Independent research has demonstrated that providing feedback on someone's seated posture has a positive effect on their sitting behaviour. That is exactly what the smart chair does. Four sensors in the seat and two in the back cushions register seven different postures. A vibrating signal in the seat indicates when the user has been sitting with a bad posture for too long. Using a colour coded label, that is attached to the seat, sitting habits can be reviewed and an overall sitting score identified.

The Axia Smart Chair will help to make the most of the ergonomic benefits of an Axia office chair. The ultimate goal is to make good sitting habits second nature, contributing to a healthy working lifestyle.



Sit smart - work sharp.
See how with our healthy working video!*



* <https://www.youtube.com/watch?v=JVy5Wim3Izw>



Ergolife
Office Furniture
Leasing Ltd

Suite L, 2 The Courtyard
Earl Road
Stanley Green
Cheadle Hulme
Cheshire
SK8 6GN

033 33 583 085
info@ergolifeseating.co.uk



The mark of
responsible forestry



BCFA **OFAS**
OFFICE FURNITURE ASSOCIATION
OF GREAT BRITAIN